

ISO 9001:2015 Certified Manufacturers & Suppliers of
Steel, Stainless Steel and Nickel Alloy Castings

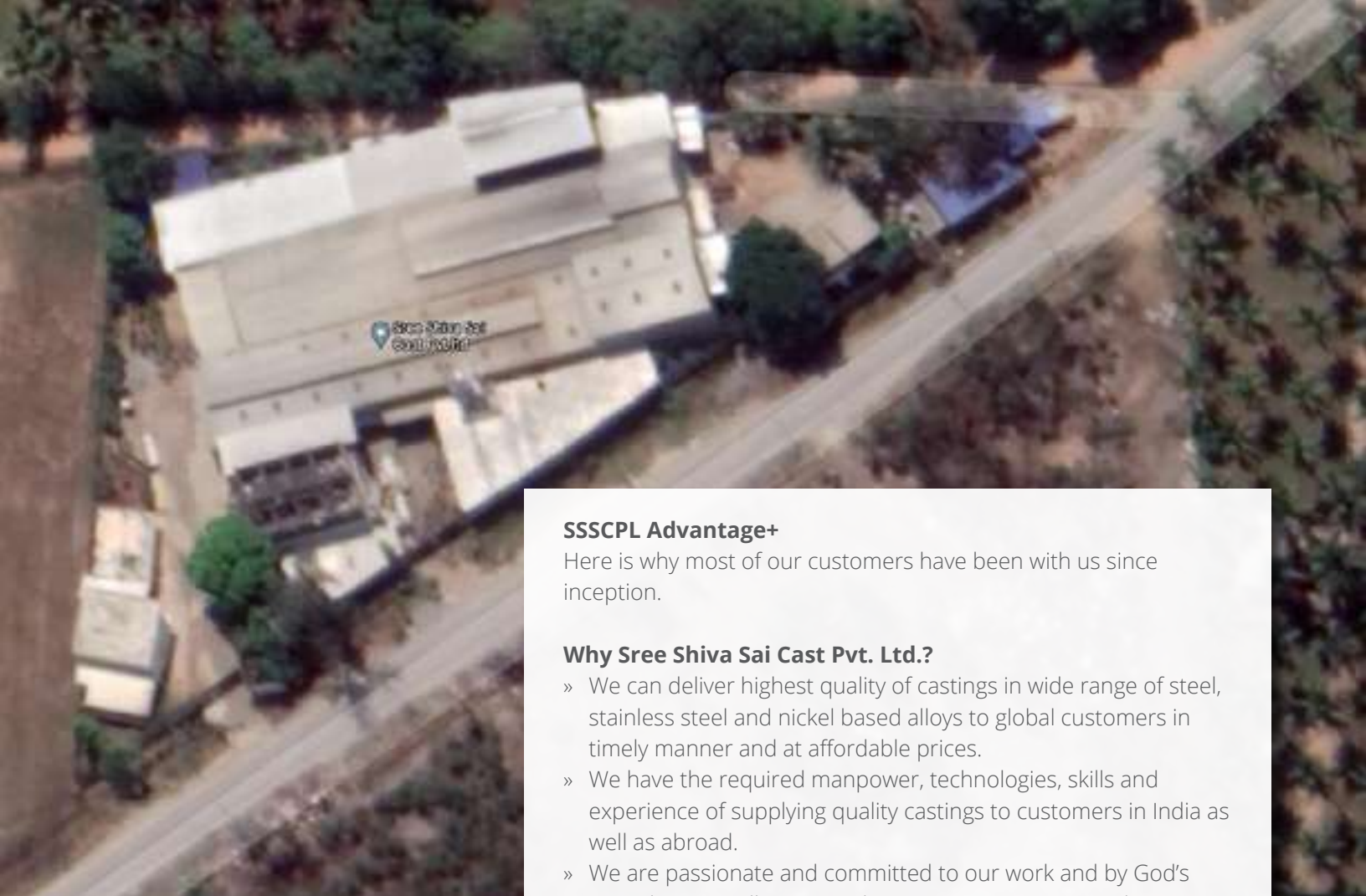
Sree Shiva Sai Cast Pvt. Ltd.



**Reliable &
Cost-Effective
Castings -
Delivered In Time.
Everytime.**

/ Casting
/ Machining
/ Assemblies
/ Finishing
/ Exports

www.ssscpl.com



SSSCPL Advantage+

Here is why most of our customers have been with us since inception.

Why Sree Shiva Sai Cast Pvt. Ltd.?

- » We can deliver highest quality of castings in wide range of steel, stainless steel and nickel based alloys to global customers in timely manner and at affordable prices.
- » We have the required manpower, technologies, skills and experience of supplying quality castings to customers in India as well as abroad.
- » We are passionate and committed to our work and by God's grace have excellent team that supports us in our endeavour.
- » We consciously deliver MORE use value than the CASH value we seek.

Why Shivamogga?

- » Shivamogga lies on the banks of the Tunga River and is popularly called "The Gateway of Malnad-the hilly region of the Western Ghats." The tropical wet and dry climate with average annual temperature being 26°C makes Shivamogga an ideal place to have a foundry and castings industry.
- » Shivamogga has an excellent connectivity by road and rail to and from Bangalore and Mysore.
- » Shivamogga has an average literacy rate of 88.02% and has excellent availability of skilled manpower for this industry.





Your One Stop Solution for all Casting needs...

Established in 1994, Sree Shiva Sai Cast Pvt. Ltd. is one of the leading ISO 9001:2015 certified foundries in Shivamogga, (Karnataka, India) specialising in the manufacture of Steel Castings.

Known for in-time fast deliveries, superior quality products, and outstanding customer service we can supply castings weighing from 1-500 kg and can deliver variable batch quantities.

We produce castings in over 40 grades of plain carbon steel to high alloy steel, stainless steel to super duplex stainless steel and Nickel based alloys. The grades manufactured are as per ASTM, EN, IS etc.

Our product range includes valve castings, pump castings, general engineering castings, railway and metro castings. Currently we can produce and supply up to 3000 tonnes of castings annually.

We can provide castings in any size or shape to suit customer needs. Castings can be supplied as rough, semi machined, fully machined and/or hydrotested as per customer specification.





Sree Shiva Sai Cast Pvt Ltd (SSSCPL) offers a total needs approach that encompasses the entire steel casting spectrum up to 500 kg. SSSCPL offers quick response on commercial, quality, non-destructive tested quality, rough or finished machined castings.

SSSCPL currently serves major industries such as mining, railways, metro, valves, pumps, steam applications, food processing, pulp and paper. Our customers depend on us to provide them with state-of-art industry expertise, advice and service.

At SSSCPL, we invest our time & resources to know your business. By having a clearer understanding of

your business requirements, we're able to integrate more effectively with you and become an integral part and a competitive advantage to your supply chain.

To ensure that your needs and expectations are surpassed every-time, our team of skilled technologists, engineers and metallurgists work hand-in-hand with you every step of the way.

We continuously strive to provide superior quality solutions in a fast, efficient, and cost-effective manner. We understand and appreciate the fact that in your success is our success.





State-of-the-art, fit-for-purpose Infrastructure

- » Established in the year 1994
- » Work with over 40 grades of plain carbon steel to high alloy steel, stainless steel to super duplex stainless steel and Nickel based alloys
- » ISO 9001:2015 Certified
- » PED 97/23/EC Certified
- » AD 2000-Merblatt W0 Approved
- » IBR Well Known Foundry



SSSCPL has excellent manufacturing set up comprising of mould shop, melting shop, heat treatment, pattern shop, sand, chemical & physical labs, fettling & NDT facilities etc.

Melting

- » Consists of Induction Furnace of the following capacities:
- » 750kgs and 750kgs crucibles with a 550KW power pack of Inductotherm make.
- » Contact and Non-Contact type Pyrometers

Fettling

We have well equipped fettling facilities spread over 12000 sq. ft. consisting of Pneumatic, flexible, swing frame & table grinders

Heat treatment

- » We have a modern Heat Treatment Plant equipped with furnaces with quenching facility of size:
- » Furnace 9 x 5 x 2.8 feet
- » Furnace 4 x 3 x 3.5 feet
- » 3MT Electric Furnace 6 x 4 x 3.3 feet

Additional Qualification of Personnel:

Level-2 certified personnel for DP, MPT, RT and UT
ASNT and IBR qualified welders

Machine shop

We have a well developed machine shop comprising 6 lathes.
We also have well developed ancillary units for machining activities.

Other equipment

- » 30HP Screw Compressor
- » 5HP Reciprocating Compressor
- » 500kgs Hanger-type Shot-blast Machine
- » Sand Drier
- » 6MT Capacity Shake Out Machine.
- » Pattern making In-house facilities for design, lay-out and fabrication of new Patterns and Core Boxes, with a huge storage facility of about 25,000 sq ft.



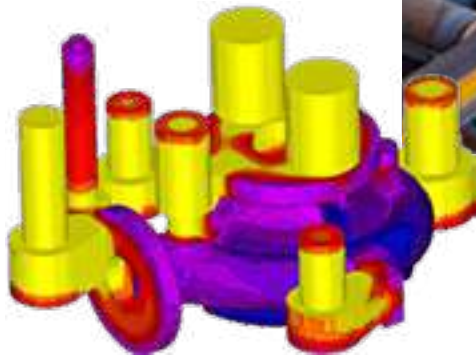


**Manufacturing
Facilities spread over
150,000 sq. ft. area**





Before a mould is even made or a casting is formed, SSSCPL technicians render the design using Simulation Software. This advanced, 3-dimensional technology allows you to “see” the casting before it’s made, it provides a solidification and heat flow simulation. This ability to develop “virtual castings” is a superior method of reducing costs, maximizing production values, and providing peace of mind. SSSCPL customers have realized both the financial and qualitative benefits of this unique pre-production tool.



Moulding Highlights

- » 6-12MT Articulated Continuous Mixer.
- » Compaction Table.
- » 8 station fast Loop-line.
- » Primary Tunnel Oven - 3m
- » Secondary Tunnel Oven - 8m





Good Castings come from Good Sand Treatment...



Casting quality is improved by dedusting even the fresh sand, thus improving the sand grain's characteristics for better compaction after mixing, greater strength and better surface finish.

We have a modern Sand Reclamation System equipped with a fluidized bed-cooling chamber which cools down the processed sand to achieve conditioned temperature.

- » 6MT/hr capacity Cooler Classifier.
- » 2MT/hr capacity Dedusting unit for Fresh Sand.

Testing Facilities

Chemical lab

We have a well established Metallurgical Laboratory consisting of :

- » Spectro Maxx CCD direct reading Optical Emission Spectrometer with proper international standards for calibration
- » Metallurgical Microscope
- » Muffle furnace for conducting internal trials



Physical lab

- » Universal Testing Machine of 40 MT capacity
- » Dynamic Hardness Tester
- » BHN, Rockwell Hardness Testing Machines
- » Impact Testing Machine
- » Profile Projector
- » Brouching Machine



Non Destructive Testing

- » In-house facility is available for:
- » Dye Penetrant Testing
- » Magnetic Particle Testing
- » Ultrasonic Testing
- » Hydro Testing
- » Radiography Testing



Inspection

- » FARO Arm-type CMM machine.
- » Other instruments for regular measurement like Vernier Caliper / Screwguage / Scale etc.

Sand Testing Lab

- » UTM
- » Sieve Testing
- » Permeability Testing
- » Clay Tester
- » Moisture Tester





Indian Boiler Regulations

PED AD 2000-Merkblatt WO



ISO 9001:2015 Certification



Castings Products

At Sree Shiva Sai Cast Pvt. Ltd. (SSSCPL), we take great pride in being able to supply a large range of Castings in accordance to ASTM, EN and other International Standards. With a variety of shapes, sizes & weights, SSSCPL has a solution to meet your specific casting needs. The castings can be supplied as rough, semi machined, fully machined and/or hydrotested as per your requirement.

The castings manufactured at SSSCPL include the following;

- » Valve Industry
- » Steam Application
- » Pump Industry
- » Strainers
- » Railways and Metro
- » Mining
- » Paper and Pulp
- » Food Processing and more...







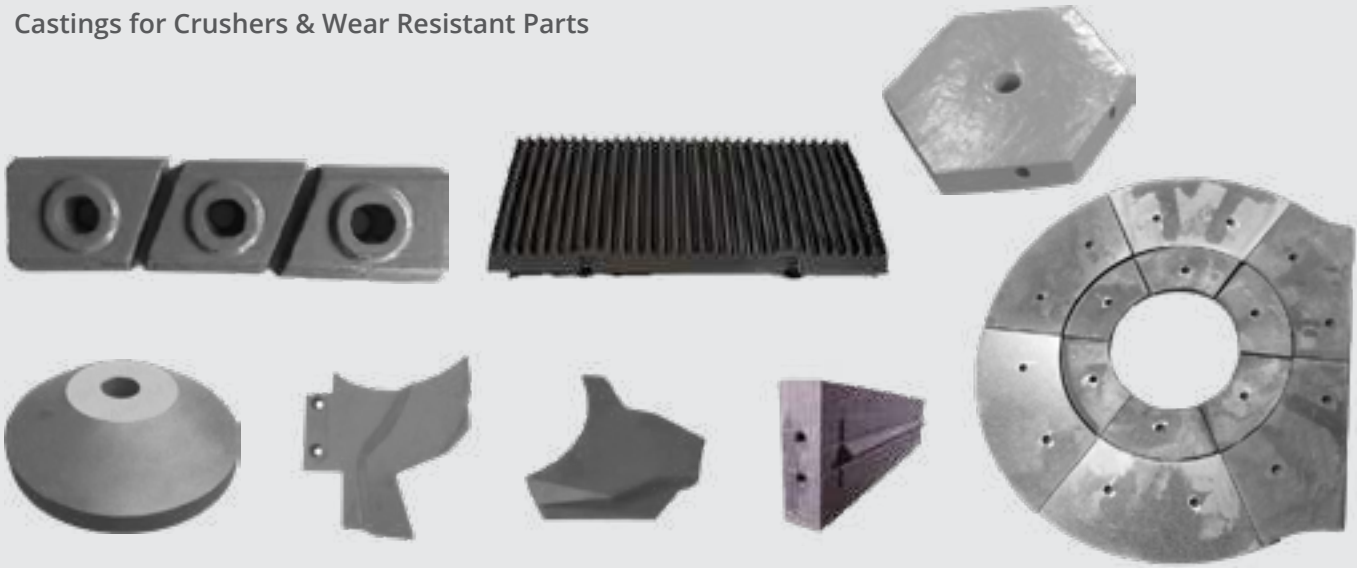
Castings for Rolling Stock

Our castings are being used by many leading rolling stock manufacturers.

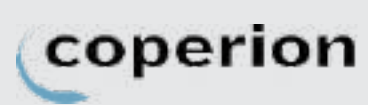




Castings for Crushers & Wear Resistant Parts



Partial list of clients



Sree Shiva Sai Cast Pvt. Ltd

Survey No. 57, Gejjenahalli
Shivamogga – 577204
Karnataka, India

Directline:

+91 92432 18250 – Sumanth
+91 92432 04876 – Hemanth

Email:

sumanth.manjunath@ssscpl.com,
hemanth.manjunath@ssscpl.com

www.ssscpl.com